

## CALIFORNIA NATIVES



## IN YOUR GARDEN

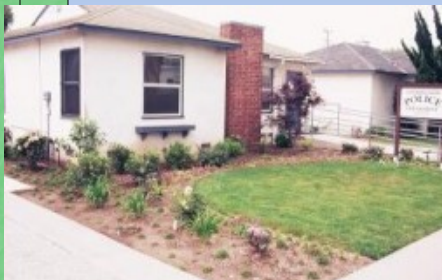
For information about this presentation contact: Deva Luna

EarthCare Landscaping 408-871-2792 [deva@earthcareland.com](mailto:deva@earthcareland.com)

## WHY NATIVES?

- California has a very unique flora
- Plants and pollinators interdependent
- Developed in our unique climate-  
cool, rainy winters & dry warm summers
- Ecological-use less chemicals
- Economical-use less water
- Smart gardening-use less labor

# SANTA MONICA DEMONSTRATION



Conventional Landscaping

"California Natives"



# CONVENTIONAL GARDEN FIVE MONTHS LATER



## CALIFORNIA NATIVE GARDEN FIVE MONTHS LATER



### California Style compared to Conventional:

- 1/4 of the maintenance labor
- 3/5 of the green waste
- 1/10 of the water
- Increased habitat
- Lowered pollution

To view online:  
[santa-monica.org/epd/news/gardengarden.htm](http://santa-monica.org/epd/news/gardengarden.htm)



Photo and Design: Stephanie Morris



Photo: Deva Luna



Design: Stephanie Morris Photo: Deva Luna



Design: Sherri Osaka Photo: Deva Luna



Design: Sherri Osaka Photo: Deva Luna



Design & Photo: Agi Kehoe



Photo: Laura Gardener



Design: Annaloy Nickum Photo: Deva Luna

# Habitat Gardens!



**Pipevine (Aristolochia) &  
Pipevine Swallowtail**





Monarch caterpillar on Showy Milkweed



Just add water to attract birds!

## "LAWN" SUBSTITUTES



Herbs, Groundcovers, Meadows



Design: Cheryl Renshaw

## MIXED HERB LAWN



Design & Photo: Stephanie Morris

## YARROW LAWN



Photo: Stephanie Morris



## ECO-LAWN

## “NO MOW” GRASSES

- Seasonal changes
- Flowers sway in the breeze
- Can be mowed as a traditional lawn or yearly
- Can be weed whacked annually
- Provide habitat for birds, butterflies
- Can be interplanted with wildflowers



NATIVE SOD NOW AVAILABLE



## CAREX PANSA

Design: Agi Kehoe

Installation: EarthCare Landscaping



## RED FESCUE



Photo: Deva Luna

**FESTUCA RUBRA  
RED FESCUE**



Design: Middlebrook Gardens Photo: Stephanie Morris

**FESTUCA OCCIDENTALIS  
WESTERN FESCUE**



Design: Middlebrook Gardens Photo: Deva Luna

## Festuca californica /Dry Creek In a parking strip



Design: Agi Kehoe Photo: Deva Luna

## WILDFLOWERS IN A MEADOW



## Chaparral, Grassland, and Desert Plants



Sun, dry or occasional deep watering



Arctostaphylos 'Dr. Hurd'  
Manzanita





Eyelas

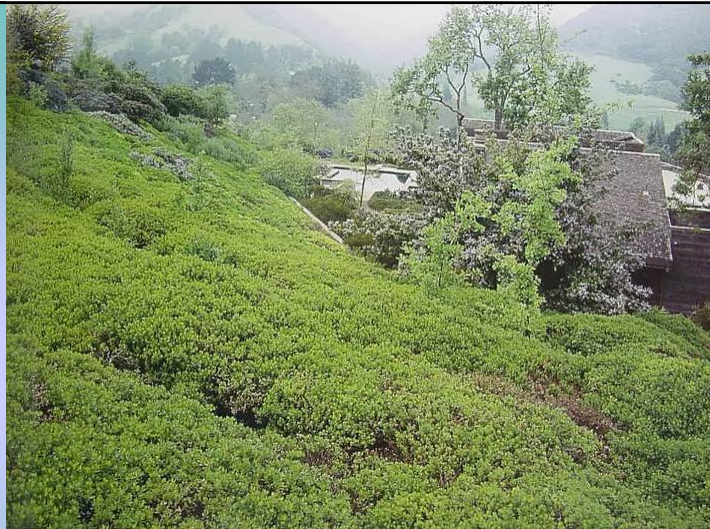
*Bouteloua gracilis*



Cleveland Sage (with Monkey Flower)  
*Salvia clevelandii*



Salvia 'Dara's Choice'  
Sage



Baccharis pillularis 'Twin Peaks'  
Dwarf Coyote Bush



California Buckwheat with  
Cleveland Sage



Dendromecon  
Island Bush Poppy





California Fuchsia  
Epilobium 'Select Mattole'



Ceanothus 'Concha'



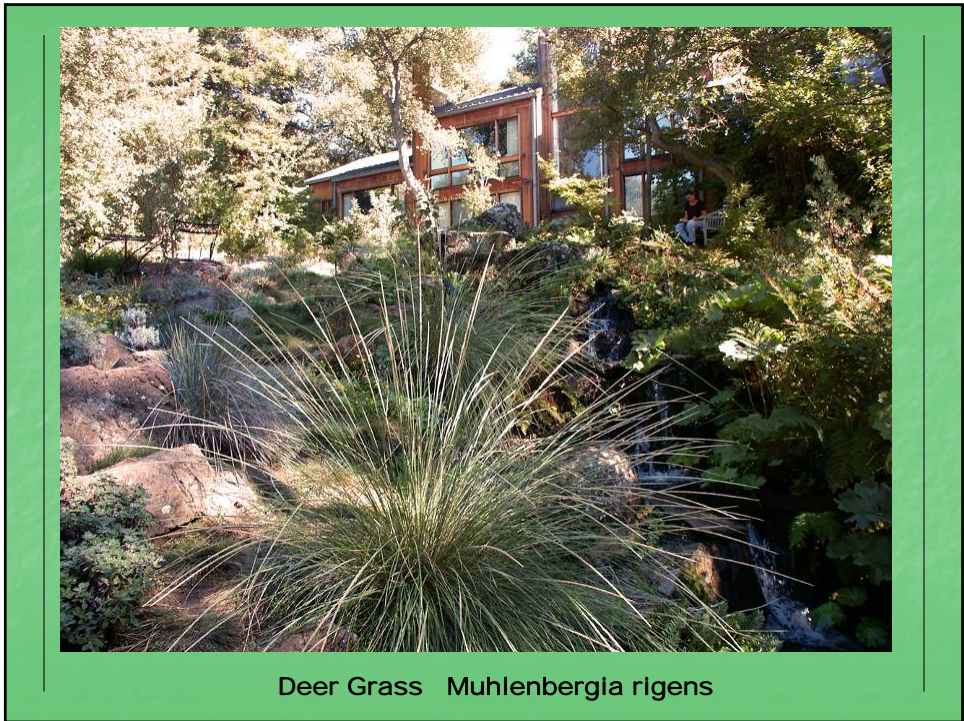
Ceanothus 'Ray Hartman' as street tree



Ruby Buckwheat  
*Eriogonum grande* var. *rubescens*



Penstemon  
heterophyllus



Deer Grass *Muhlenbergia rigens*



Monkey Flower  
*Mimulus aurantiacus* 'Valentine'



Monkey Flower, Cleveland Sage









Poppy, Penstemon & Buckwheat



## Riparian and Coastal Plants



Part sun, watered regularly  
Afternoon shade, moderate water





Idaho Fescue  
*Festuca idahoensis*



ARMERIA - Thrift



Design: Sherri Osaka Photo: Deva Luna

## Fragraria – Beach Strawberry



Tiger Lily  
*Lilium pardalinum*



Vine Maple  
*Acer circinatum*



Design & Photo: Sherri Osaka

*Ceanothus hearstiorum*  
California Lilac

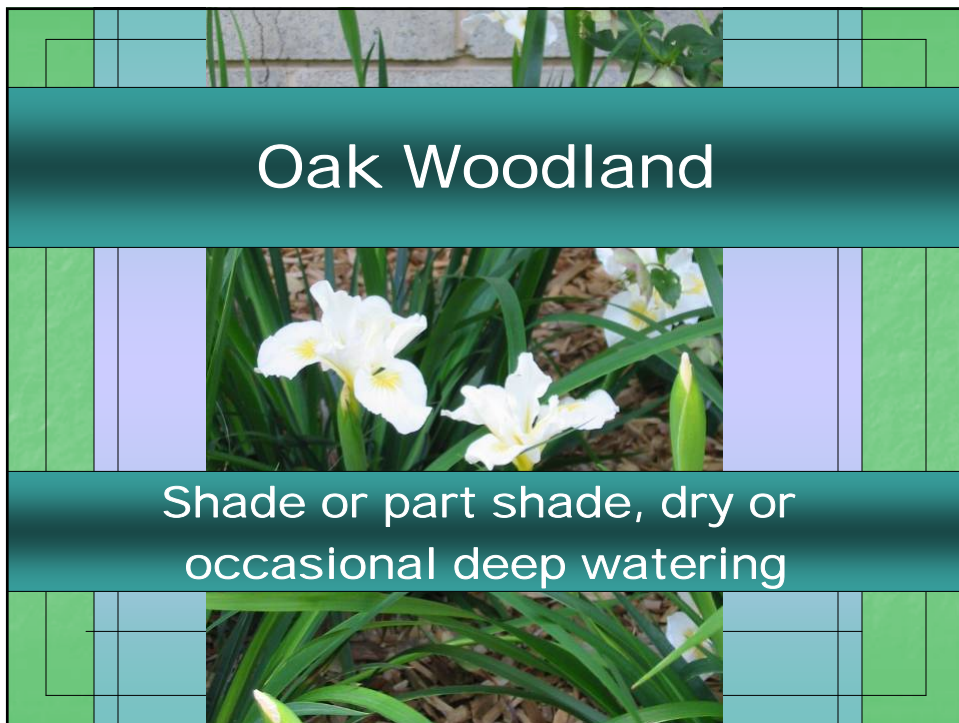
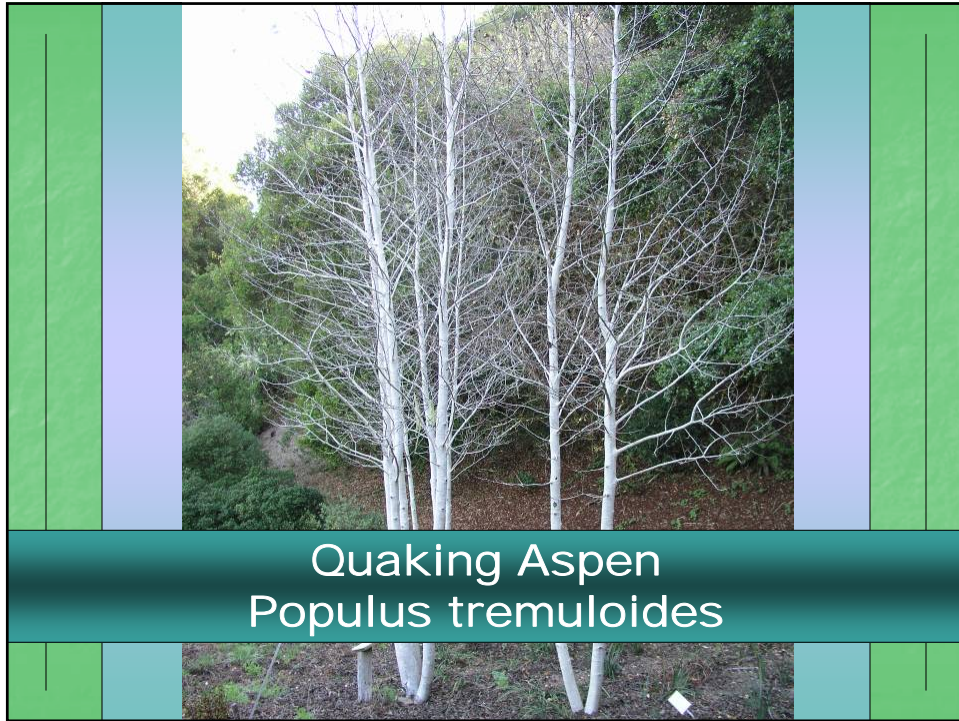


Cedros Island Verbena  
Verbena lilacina 'De La Mina'



Photo: Deva Luna

Beach Aster  
Erigeron glaucus 'Wayne Roderick'







Pacific Coast Hybrid Iris



Design: Fran Adams Photo: Deva Luna

**Arctostaphylos uva-ursi - Manzanita**  
**Heuchera 'Old La Rochette' - Alum Root**



Coyote Mint  
*Monarda villosa*



*Artemisia pinocephylla* 'David's Choice'  
Sandhill Sagebrush



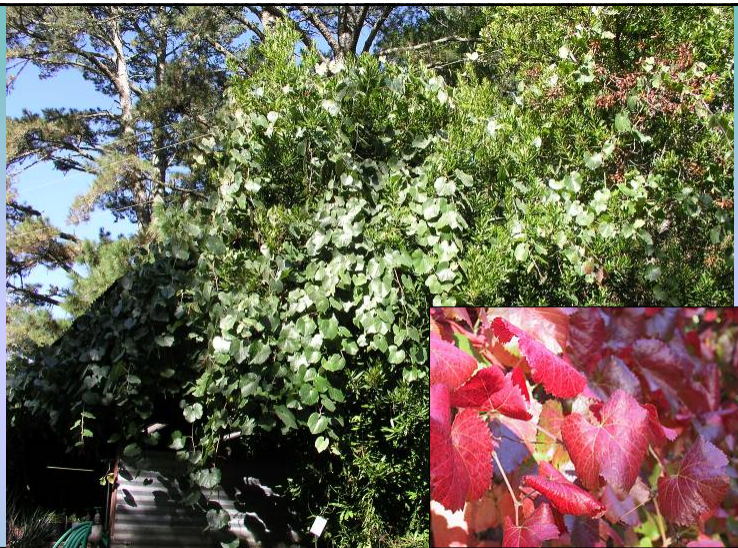
Hummingbird Sage  
*Salvia spathacea*



California Coffeeberry  
*Rhamnus californica* 'Eve Case'



Toyon  
*Heteromeles arbutifolia*



California Grape  
*Vitis californica* 'Roger's Red'

# Redwood Forest



Shade, watered regularly



Wild Ginger  
*Asarum caudatum*



Western Bleeding Heart  
*Dicentra formosa*



Western Columbine  
*Aquilegia formosa*



Flowering Currant  
*Ribes sanguineum*



Western Azalea  
*Rhododendron occidentale*



Western Sword Fern  
*Polystichum munitum*



Wax Myrtle  
*Myrica californica*



