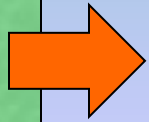


First of a 4 part series



1. Drought Tolerant Landscape Design
April 4, 2017
2. Drought Tolerant Plant Selection
April 25 , 2017
3. Drought Tolerant Landscape Installation
May 2 , 2017
4. Drought Tolerant Landscape Maintenance
May 16, 2017

Steps for Landscape Design

1. Goals
2. Budget
3. Site Analysis
4. Base Map
5. Conceptual Diagram
6. Select Plants

Common mistakes

- The collector's garden (one of everything!)
- Overplanting
- Not enough contrast between plants
- Designing by flower color (needs "bones")
- Not creating conditions for the plants to thrive
- Mixing different hydrozones
- Not maintaining the garden

Design Concepts

- The rule of odd numbers
- Massing
- Layering
- Repetition
- Contrast
- Function



Design & photo by Pete Veilleux

Leaf texture contrast is important



GOOD CONTRAST



POOR CONTRAST

Drawn by Fran Adams



Design: Stephanie Curtis Photo: Deva Luna

Texture, massing, repetition



Design: Stephanie Morris Photo: Deva Luna

Massing, repetition, layering



Textural contrast & massing



Structure & texture



Design: Sherri Osaka Photo: Deva Luna

Structure



Hydrozoning

Photo: Carol Bornstein



California Buckeye

Try to create year-round interest



Spring



Douglas Iris & Alum Root

Summer



Autumn Sage & Beach Aster



CA Fuchsia & Deer Grass

Fall



Winter textures

Cleveland Sage & Deer Grass

BONES:

Hardscape that is attractive, bold and functional



BONES:

Contemporary retaining wall



Native Horsetail (keep contained!)

BONES

can also be plants with good structure

Dr. Hurd Manzanita



GUTS:

Outstanding and hard working perennials



Cedros Island Verbena & Poppies

SKIN:

Ground covers that tie it all together visually



Green Supreme Manzanita & Pt. Sal Spreader Sage

ACCENTS:

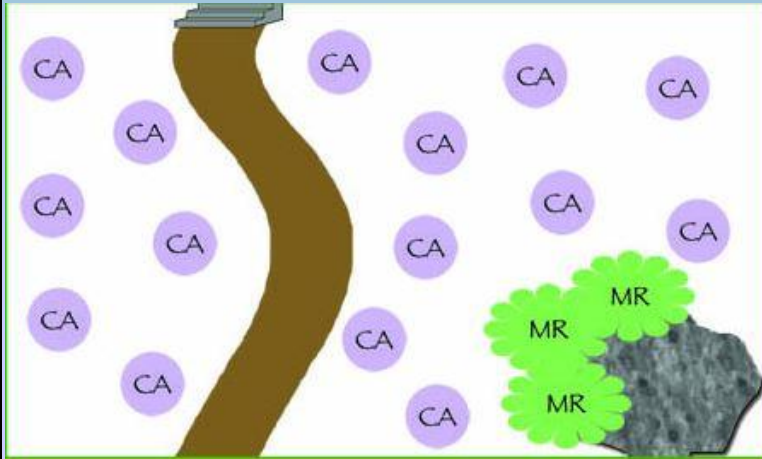
Focal points to draw the eye



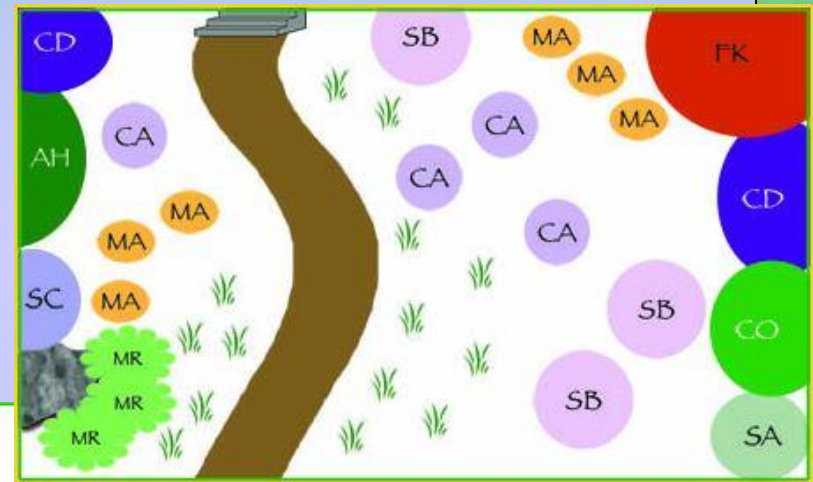
What do you need for the design?

- Measuring tape(s)
- Ruler (but an architect's scale is easier)
- Large piece of paper (gridded is easier)
- Compass or another way to find north

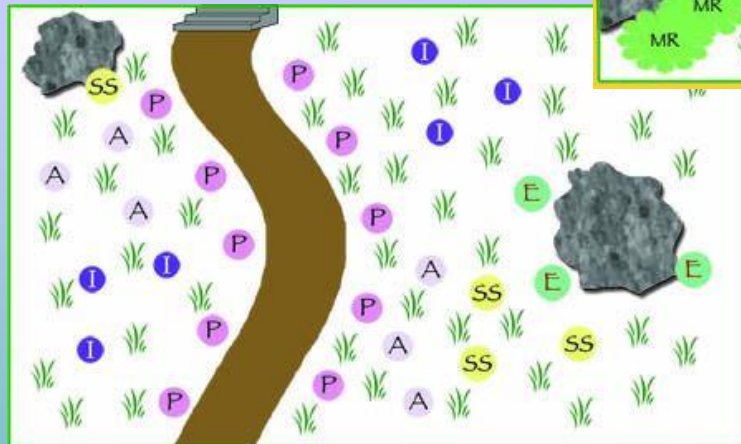
Sample Designs from Yerba Buena Nursery



Ground covers & grasses



Meadow with ground cover & habitat shrubs



Meadow with small grasses & colorful perennials

What does professional landscape design cost?

- Typical landscape designer rates are around \$75-125/hr
- Landscape architects are higher (usually 10-12% of construction cost)
- Average front yard design costs range from \$1000 to \$2500
- Average backyard design costs range from \$2000 to \$4000

Professional Costs:

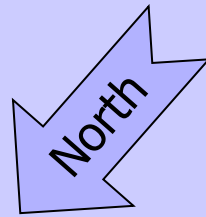
<http://www.earthcareland.com/what-we-do/installation.html>

Example of Goals

- Low maintenance
- Save water
- Bird and pollinator habitat
- Path to back gate
- Screening neighbor's ugly shed
- Compatible with style of house & neighborhood
- Make entry more welcoming
- Landscape around an existing redwood tree

Then prioritize the list

Begin by measuring

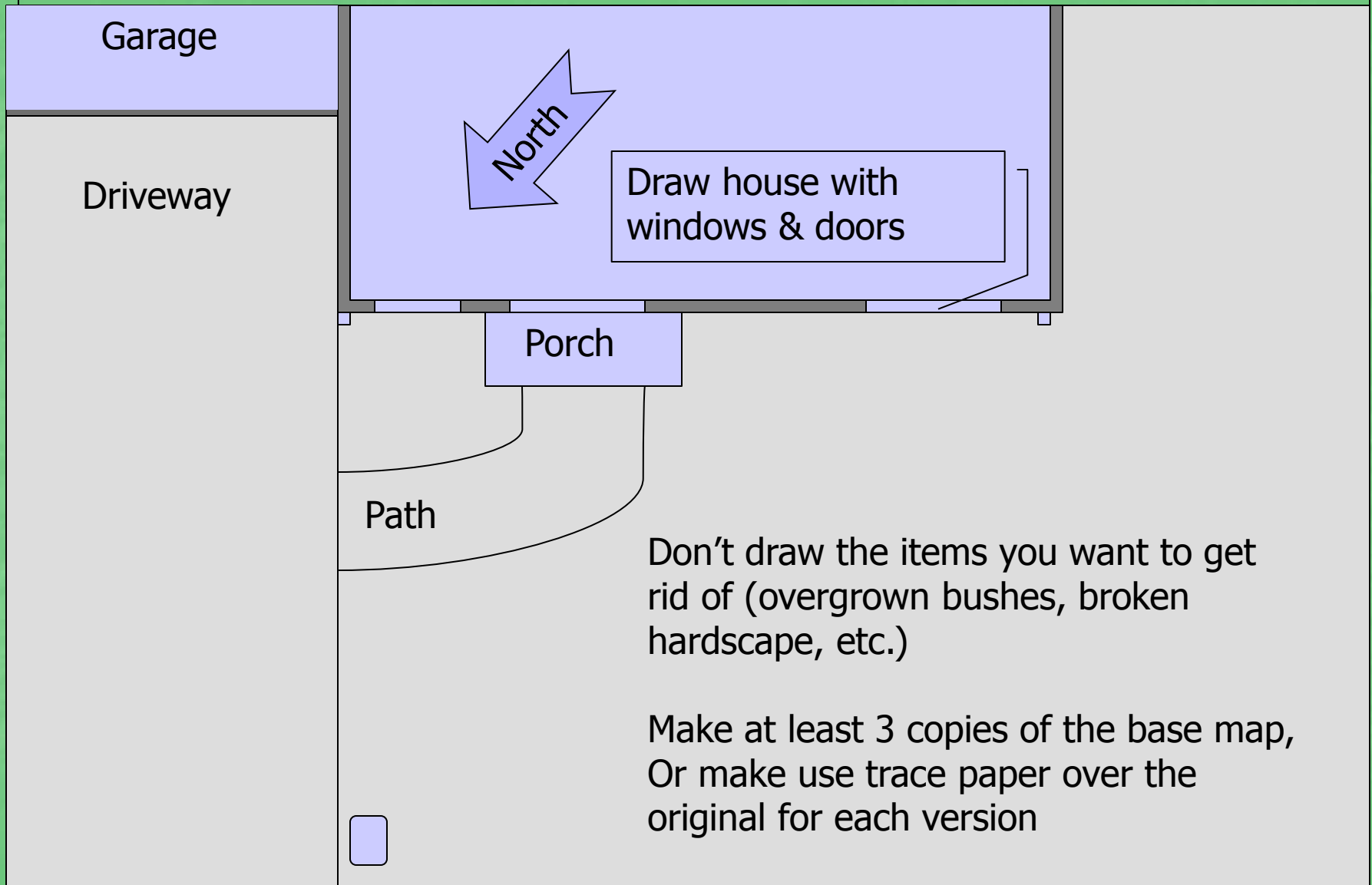


Start by measuring the whole area

Fit it on your page at $1/8''$ or $1/4''$ per foot

1. Site the house; show property lines
2. North arrow
3. Driveway and paths, hose bibbs, utilities, downspouts, fence and gates
4. Trees/shrubs that are staying

Base Map Example



Site Analysis

Sunset climate zone

Look for possible microclimates

Soil testing

Identify plants to remove (be critical here!)

Identify sun/shade patterns

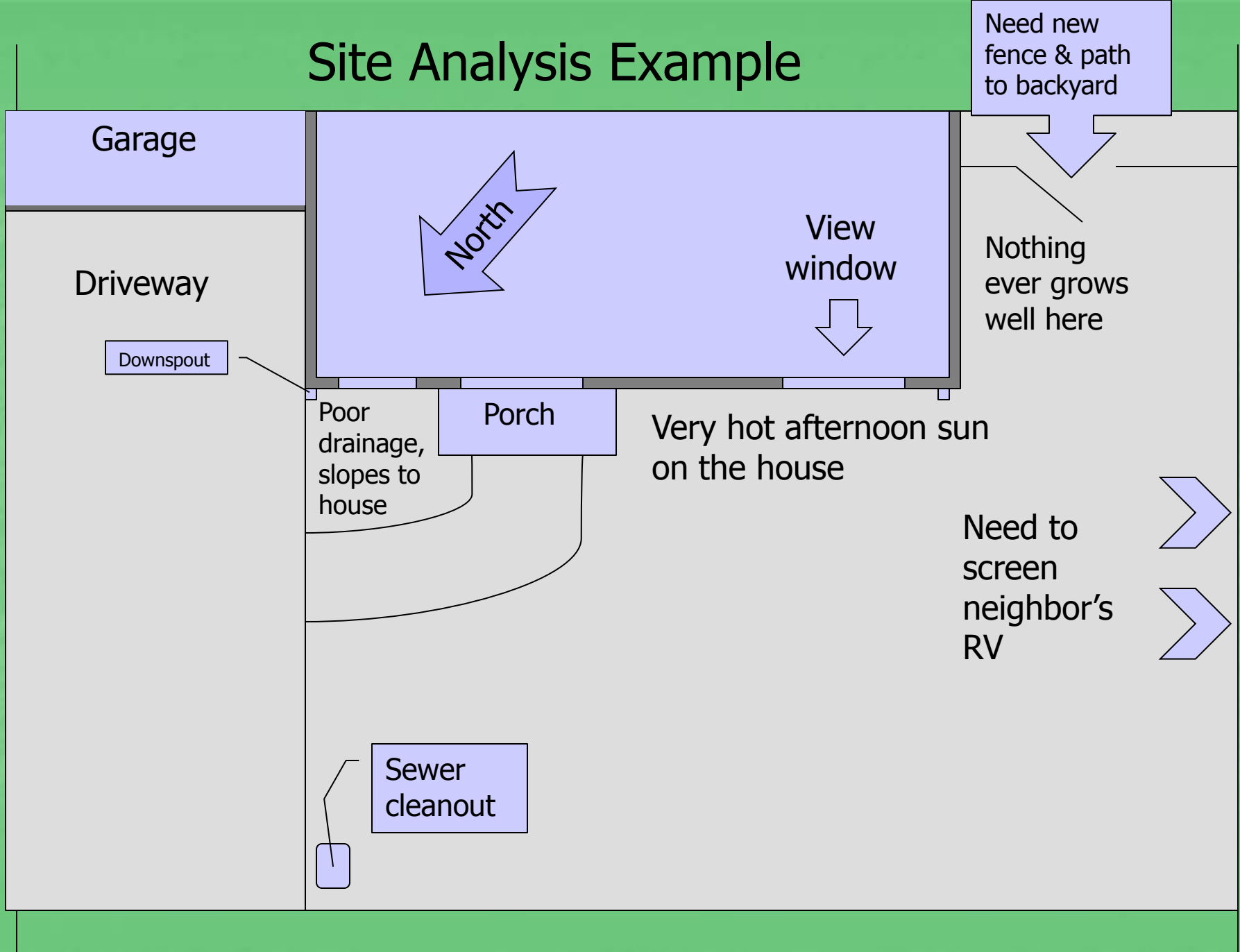
Important views of and from the house

Things you want to hide

Overhead wires, poles, trees (& neighbor's
overhanging tree too)

Logically traveled paths

Site Analysis Example



Garage

Driveway

Downspout

North

View window

Need new fence & path to backyard

Nothing ever grows well here

Poor drainage, slopes to house

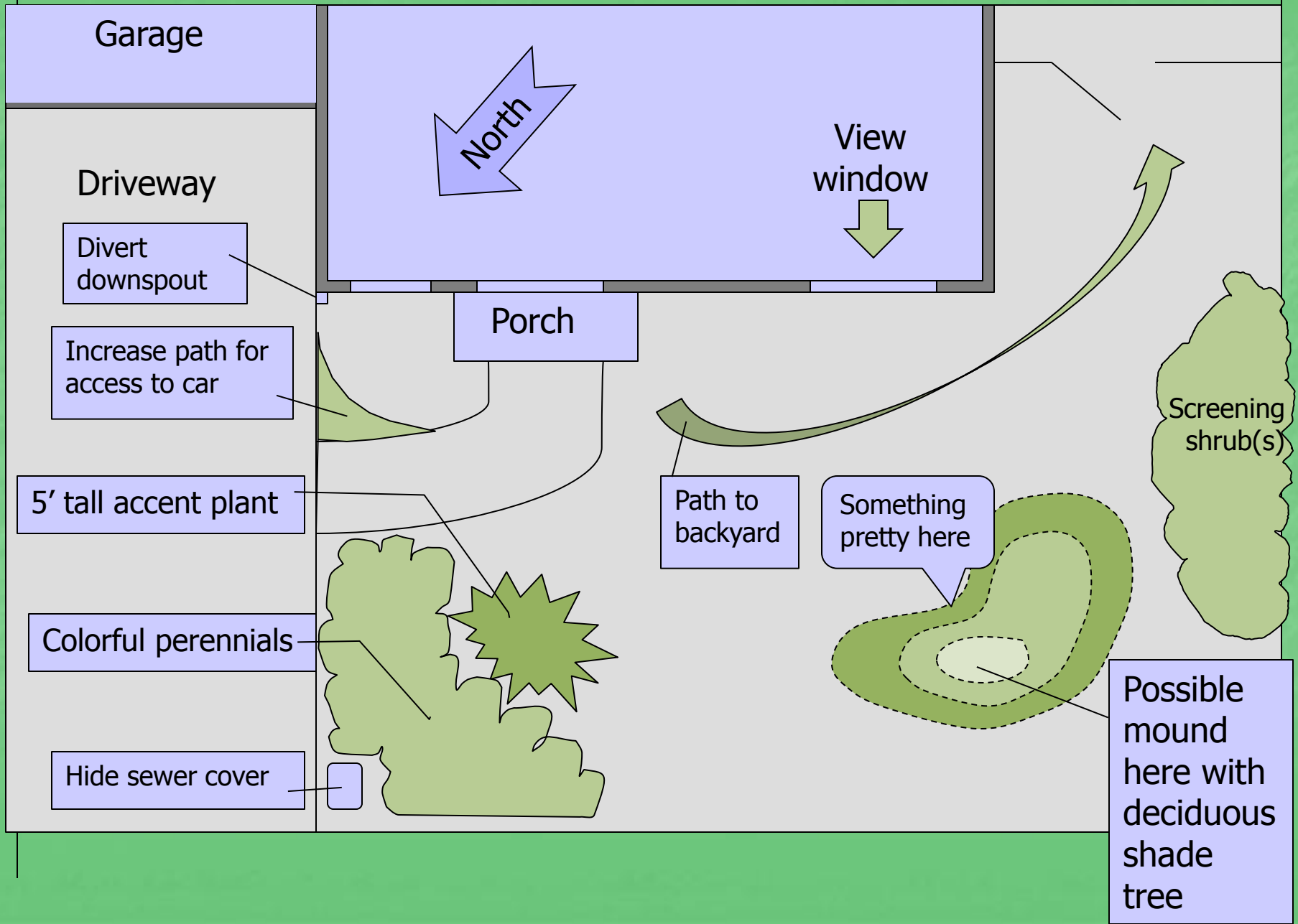
Porch

Very hot afternoon sun on the house

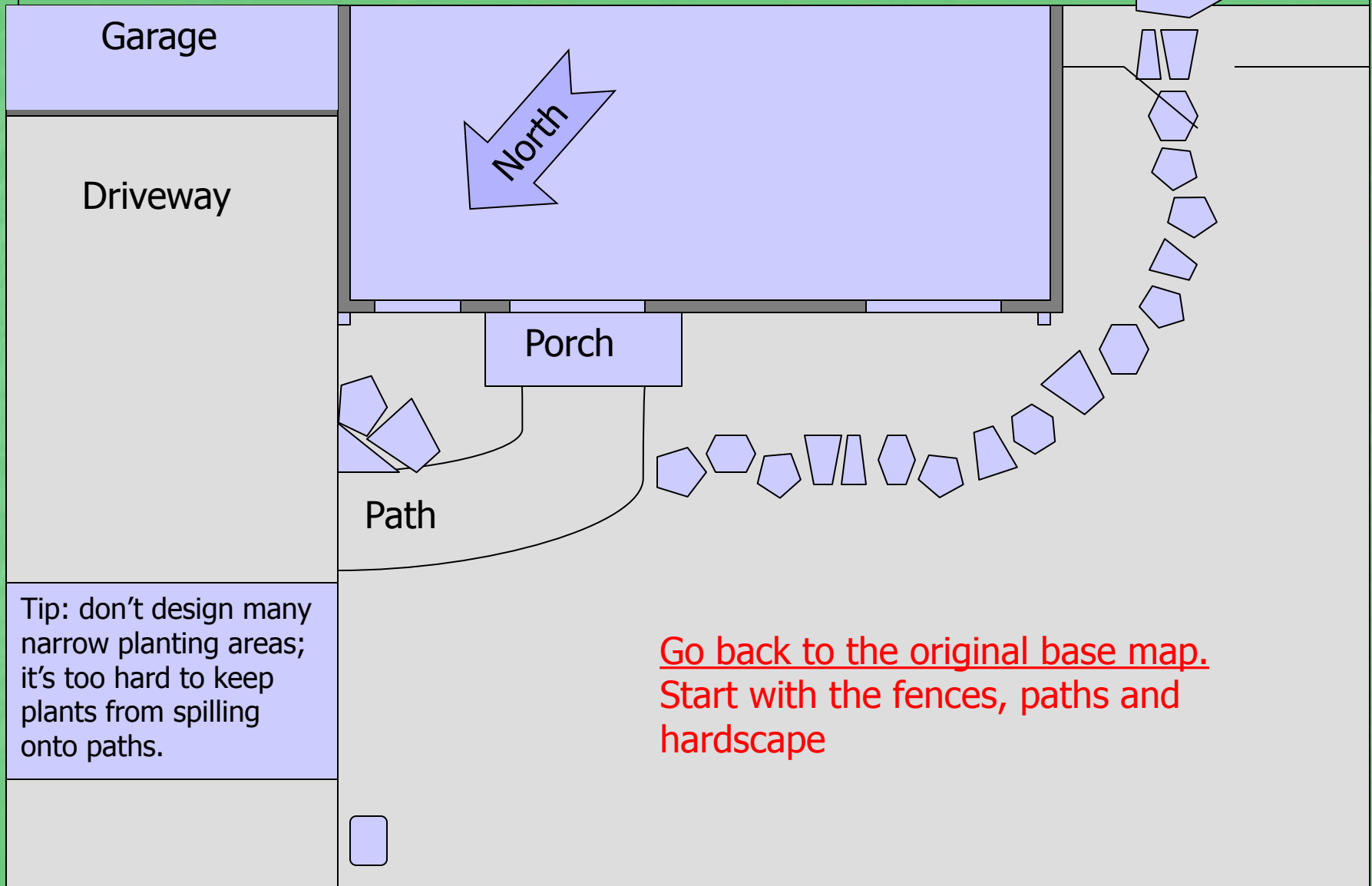
Need to screen neighbor's RV

Sewer cleanout

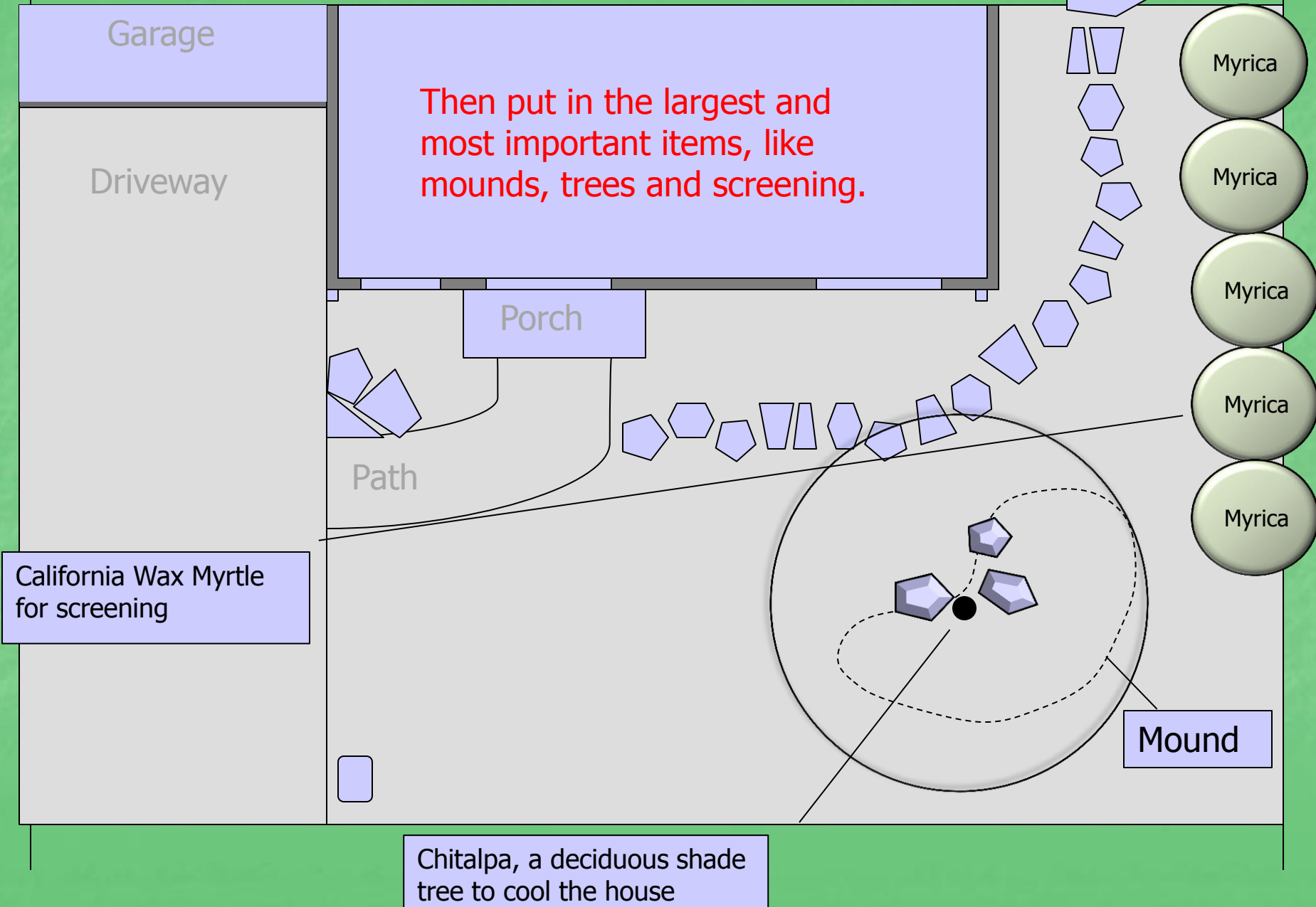
Conceptual Diagram Example



How you create the plan



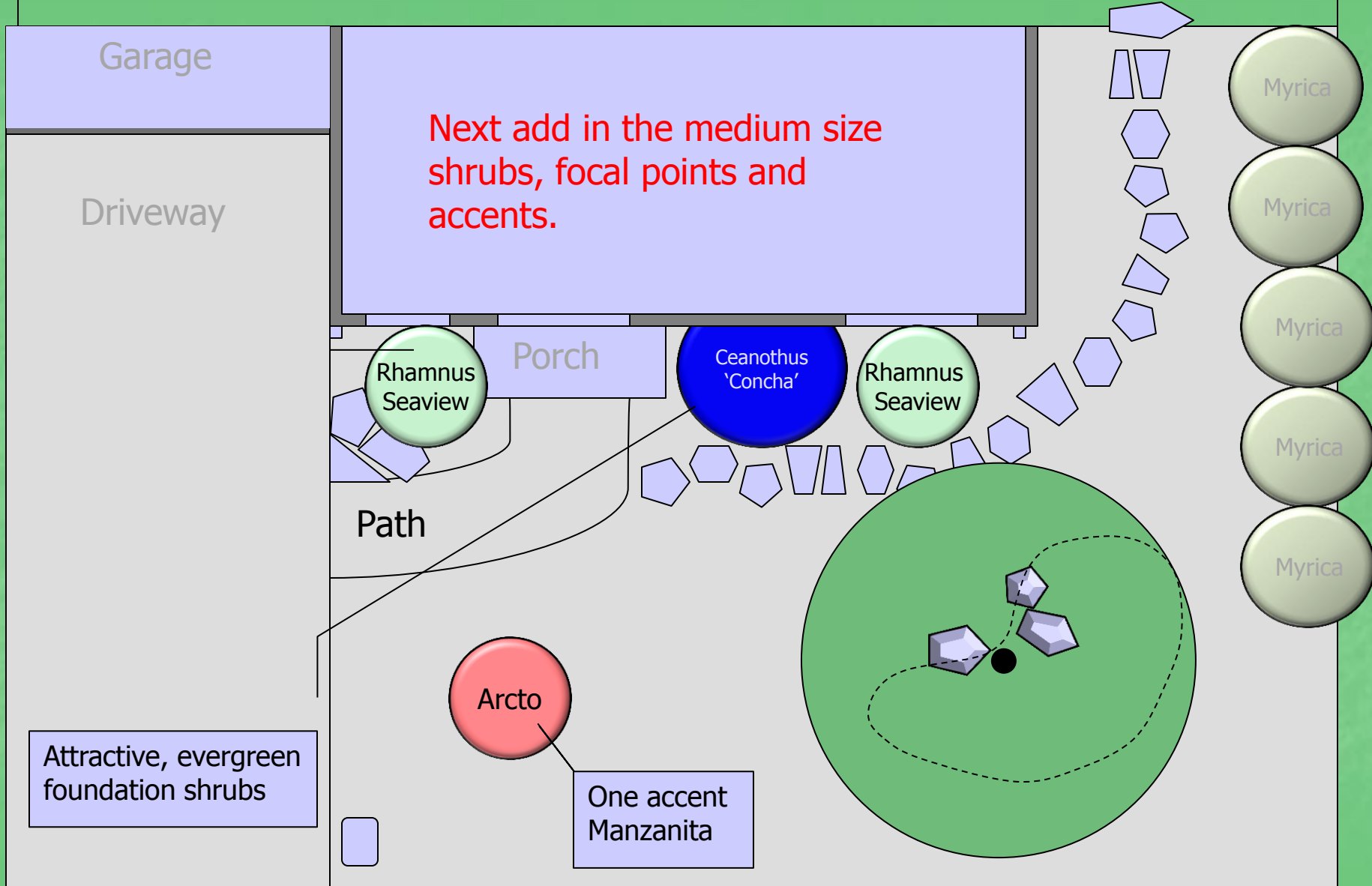
Trees & Screening: The Big Bones



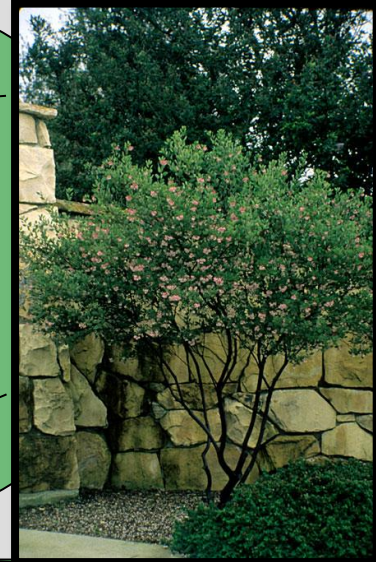
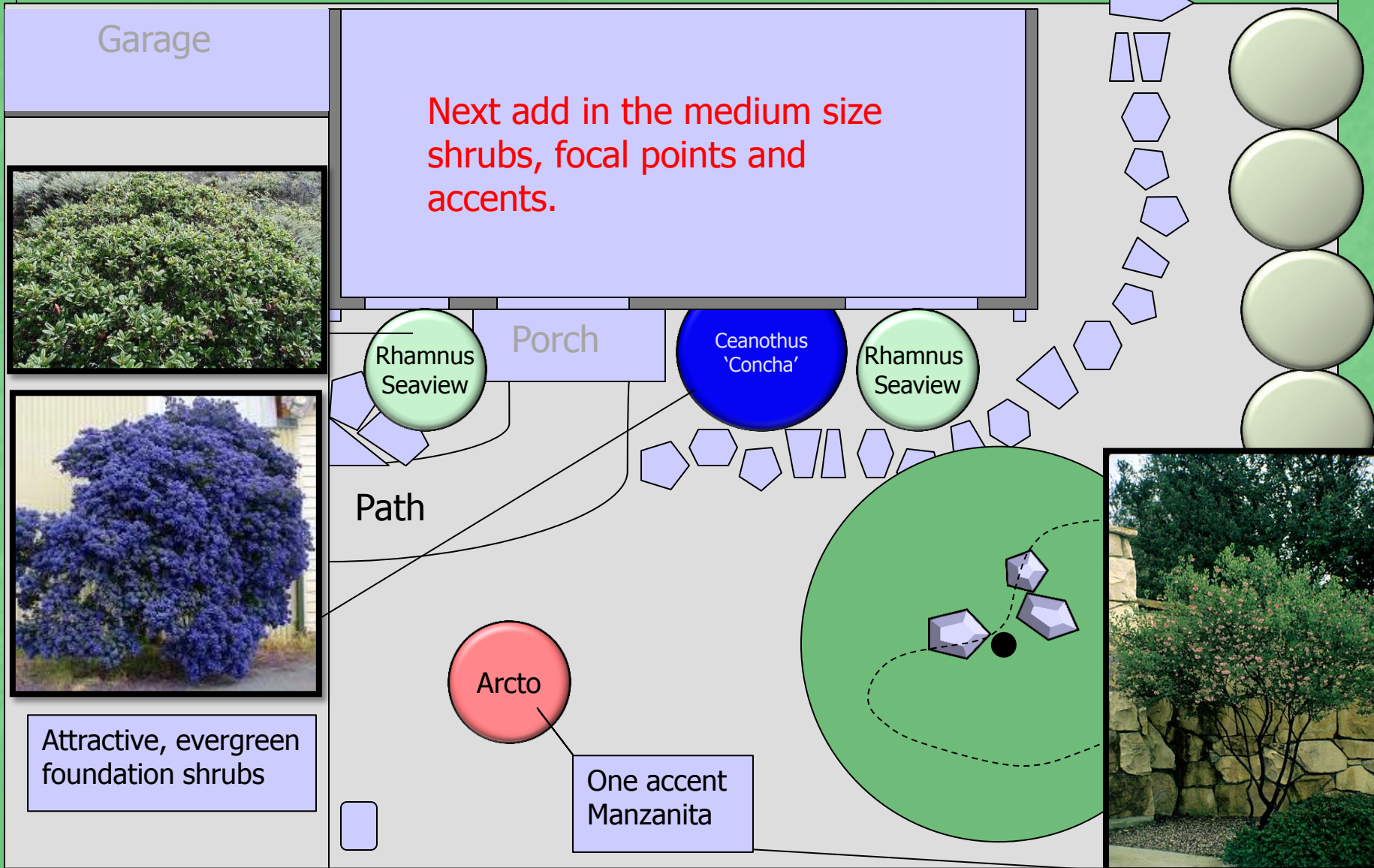
Trees & Screening: The Big Bones



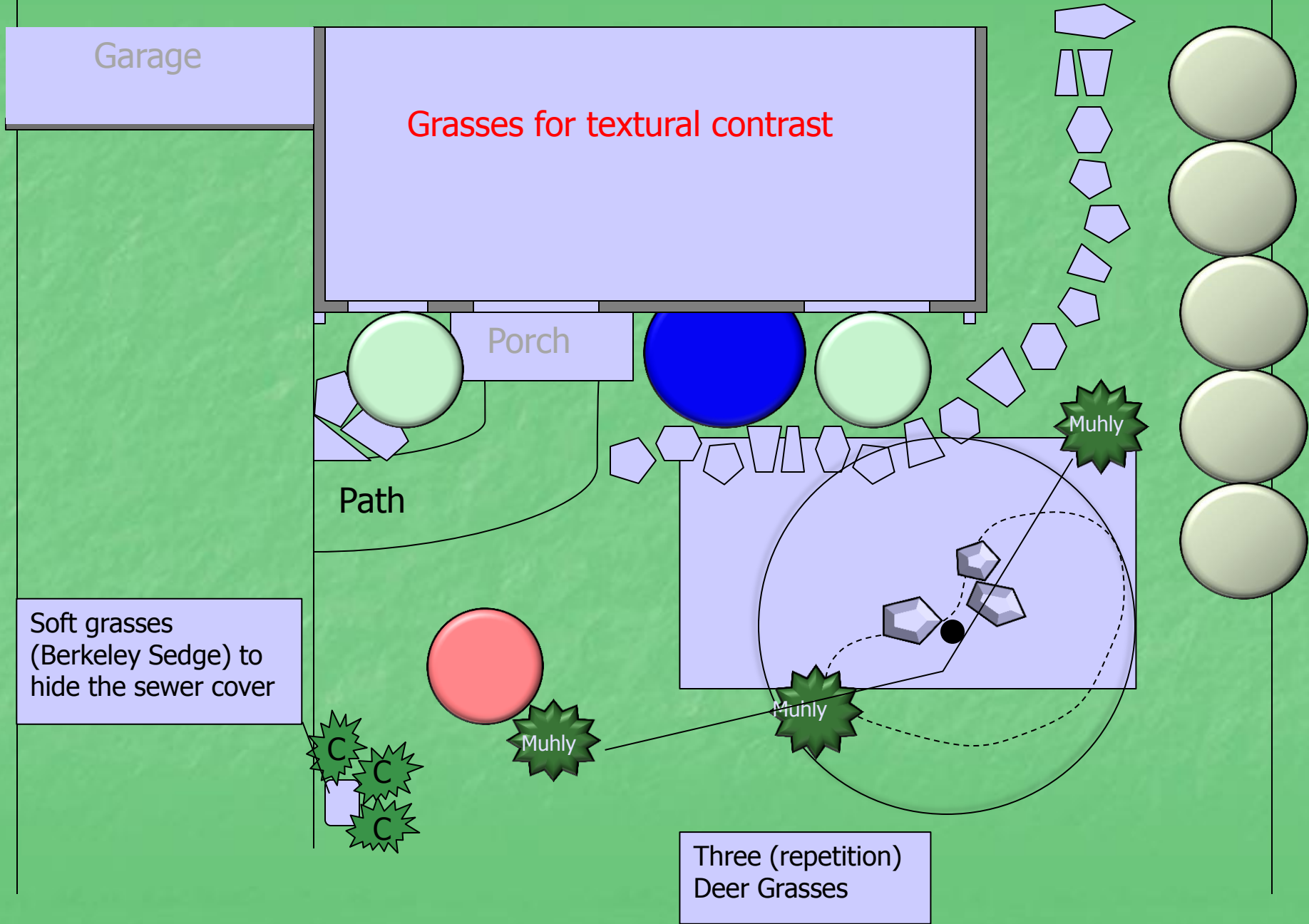
Medium Size Shrubs: The Smaller Bones



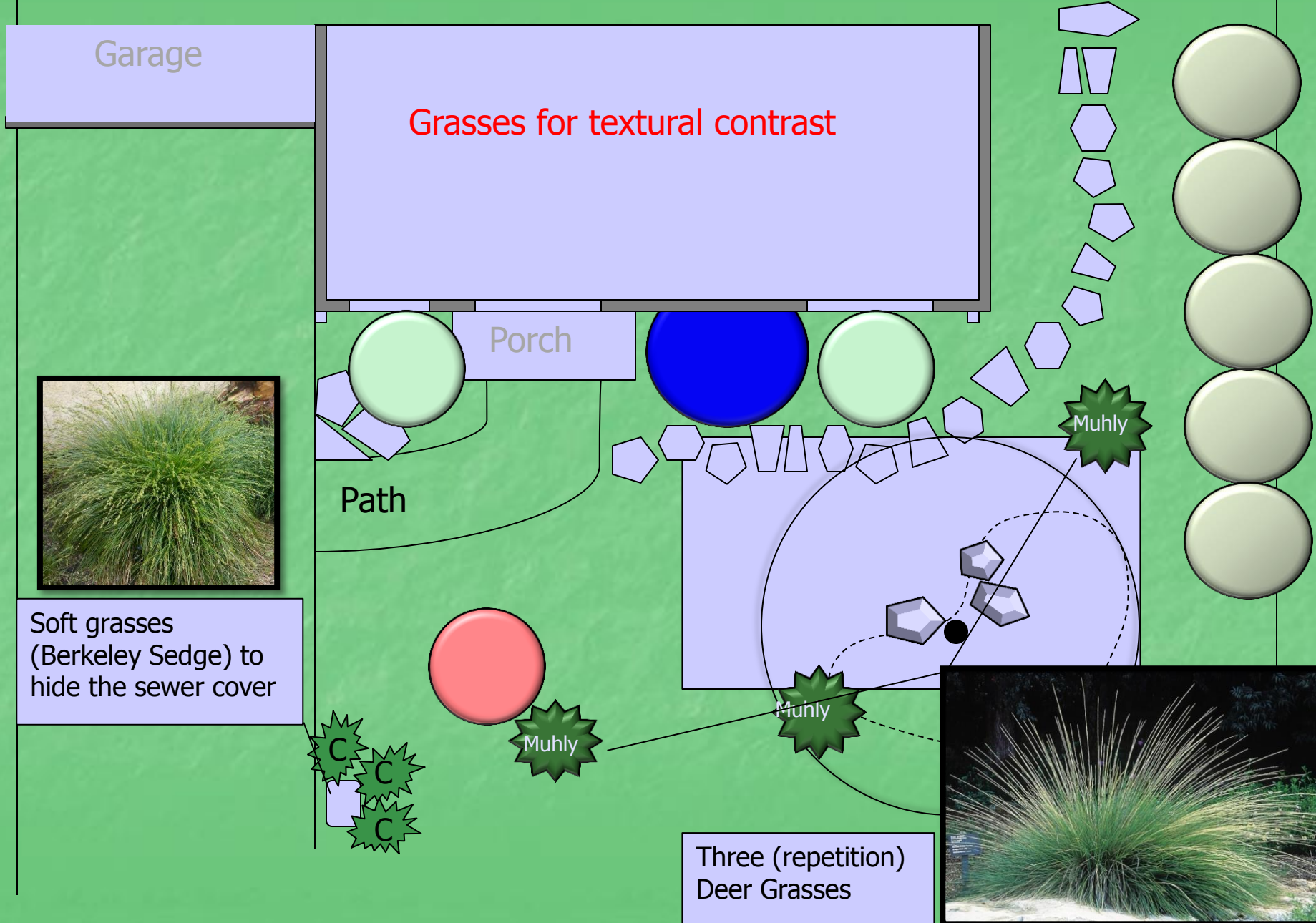
Medium Size Shrubs: The Smaller Bones



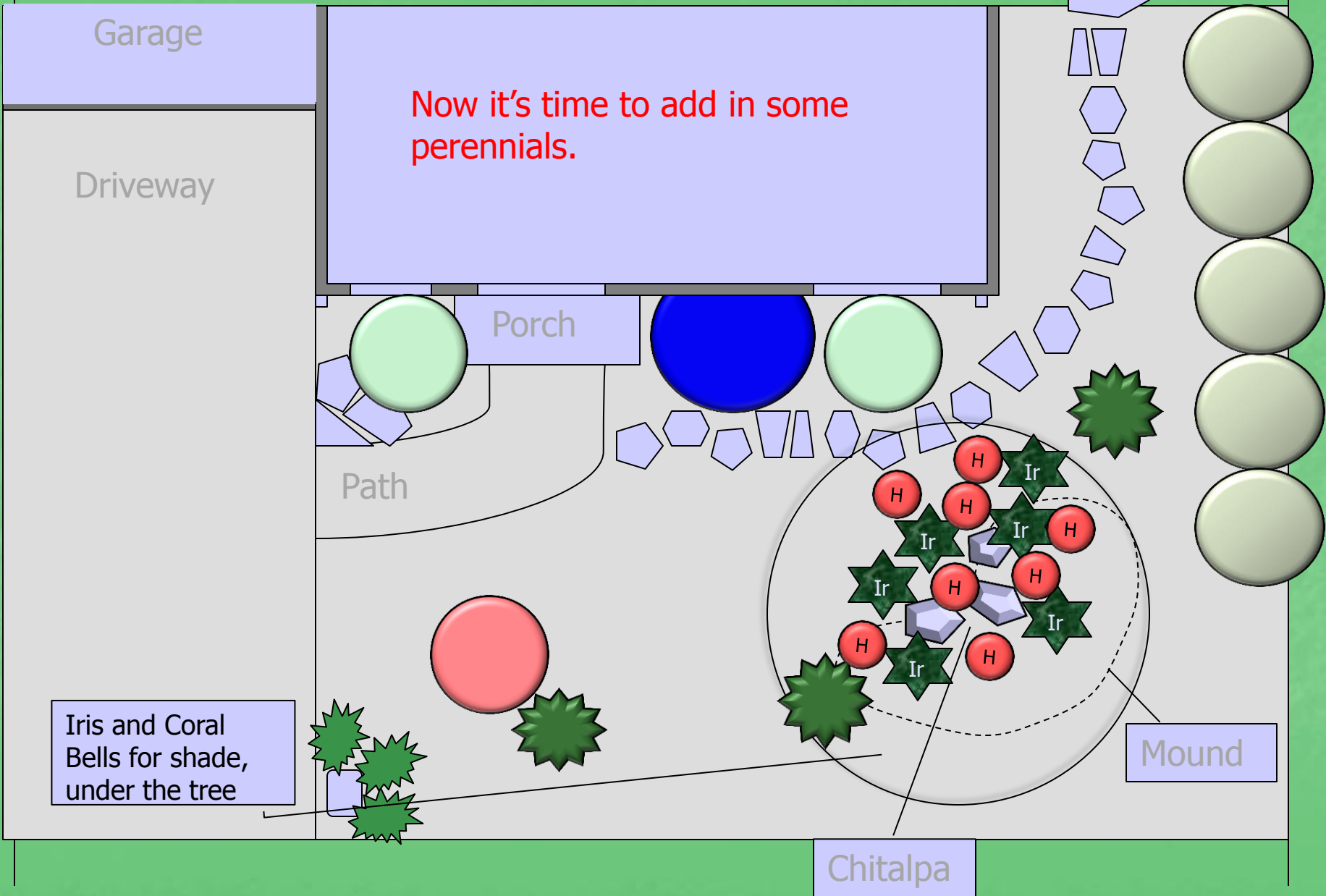
Medium Size Shrubs: The Smaller Bones



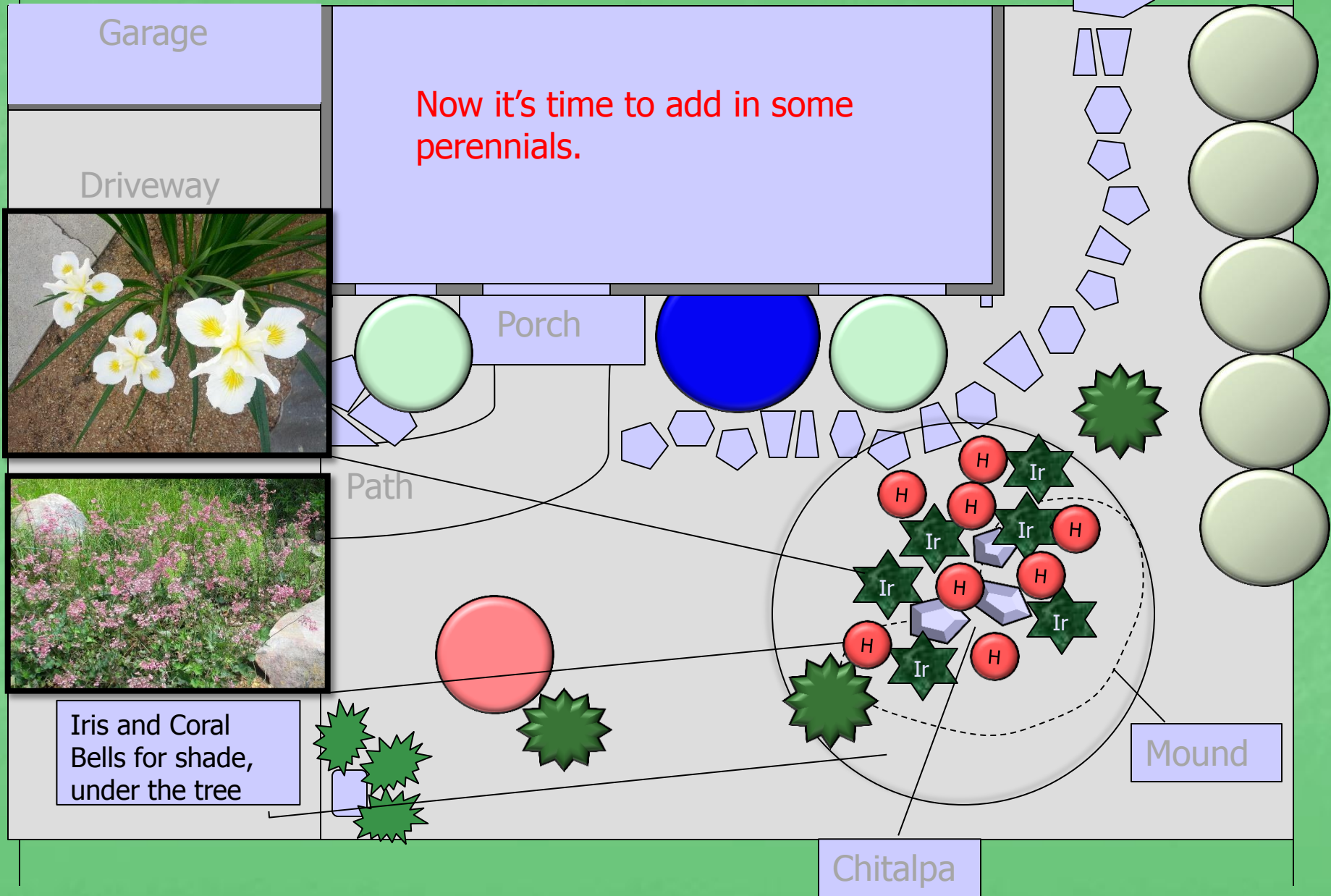
Medium Size Shrubs: The Smaller Bones



Perennials: The Guts

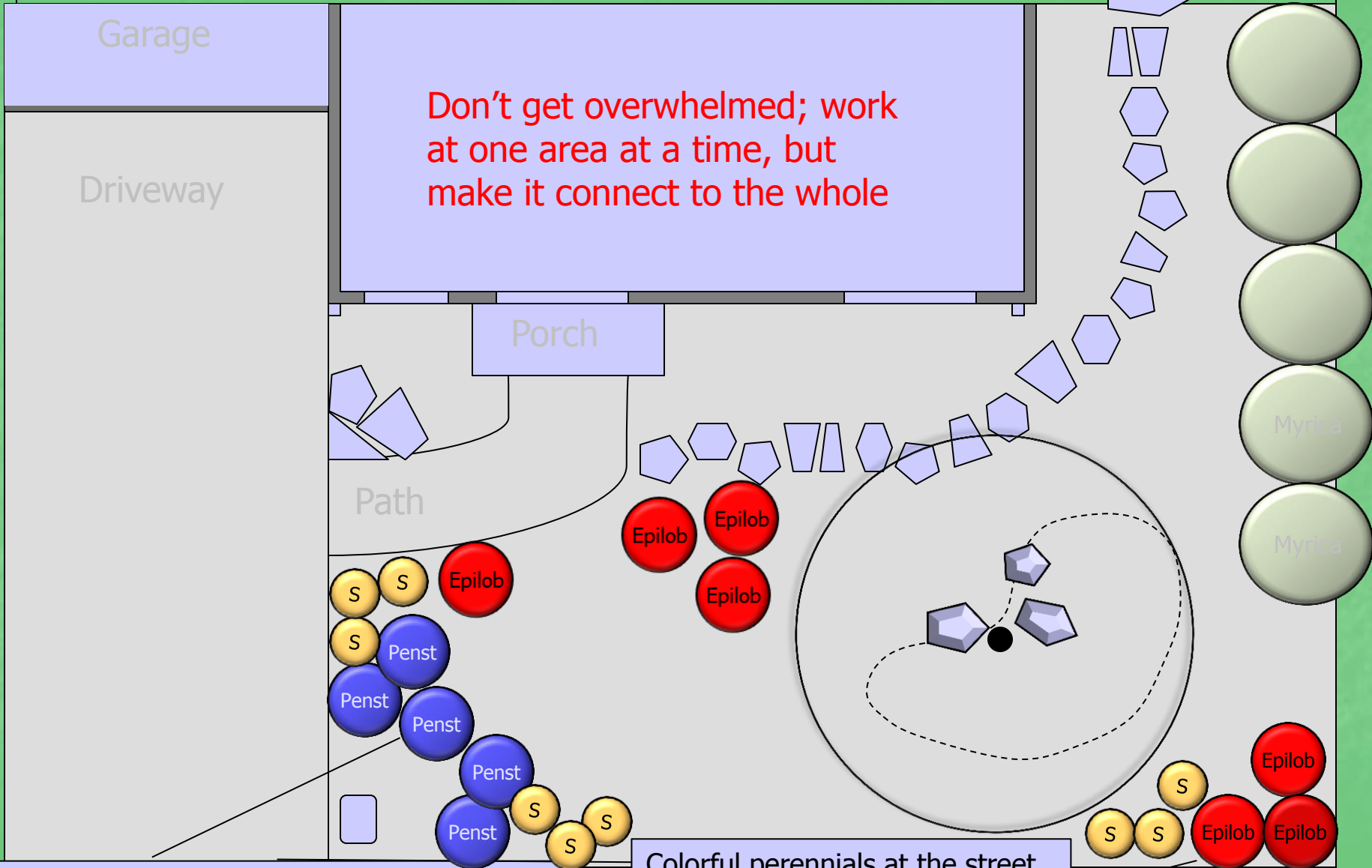


Perennials: The Guts



Keep infilling

Don't get overwhelmed; work at one area at a time, but make it connect to the whole



Sulfur Buckwheat, Calif Fuchsia and Foothill Penstemon perform in hot, dry areas.

Colorful perennials at the street
Tip: Keep plants low near walkways

Keep infilling

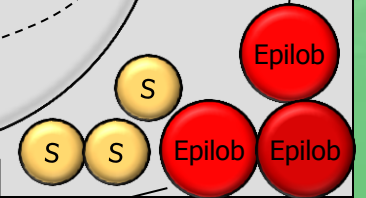
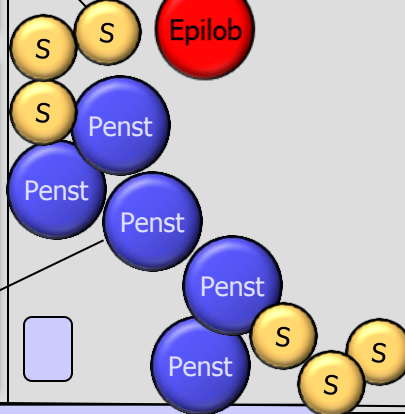
Don't get overwhelmed; work at one area at a time, but make it connect to the whole

Garage

Driveway

Porch

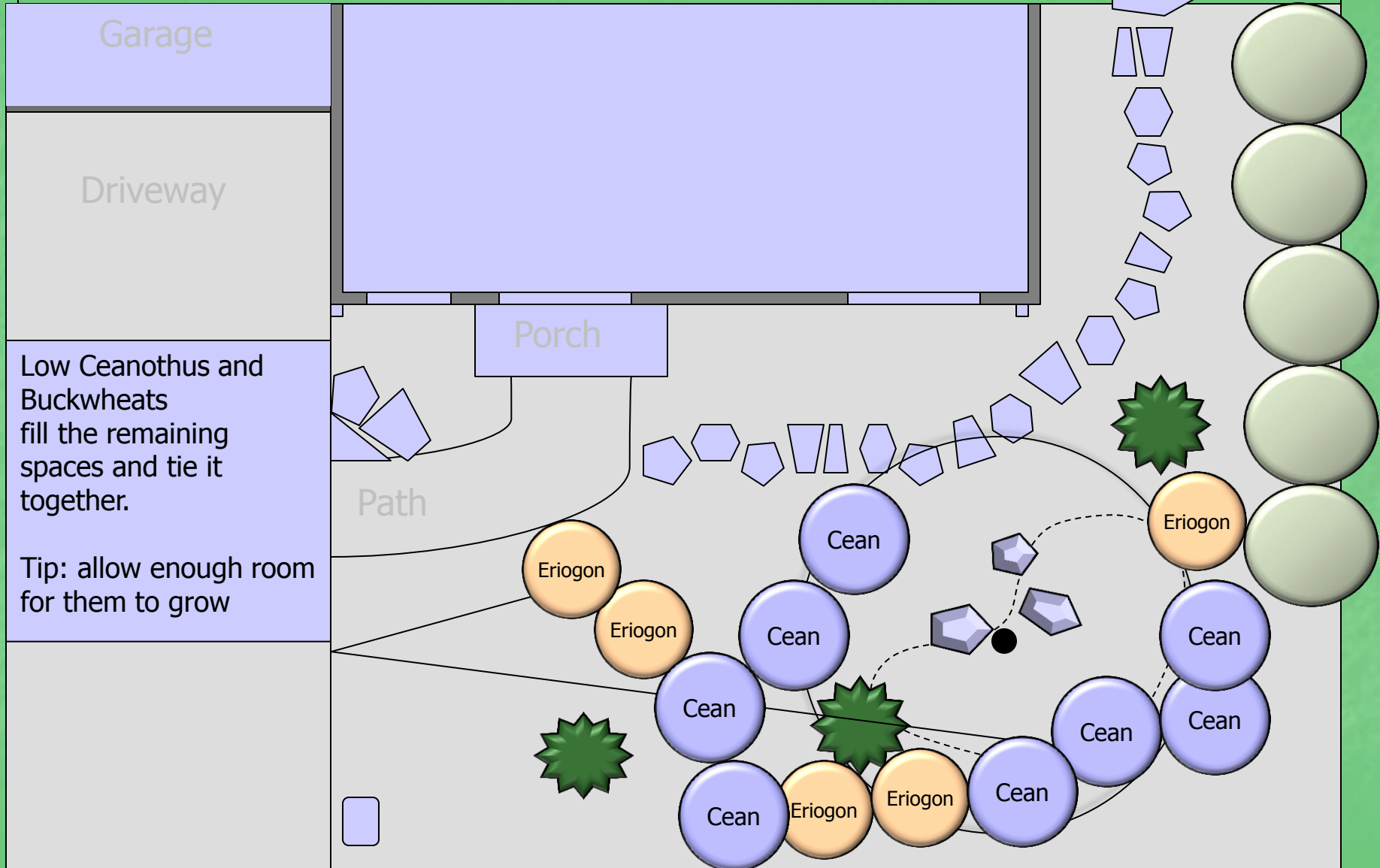
Path



Sulfur Buckwheat, Calif Fuchsia and Foothill Penstemon perform in hot, dry areas.

Colorful perennials at the street
Tip: Keep plants low near walkways

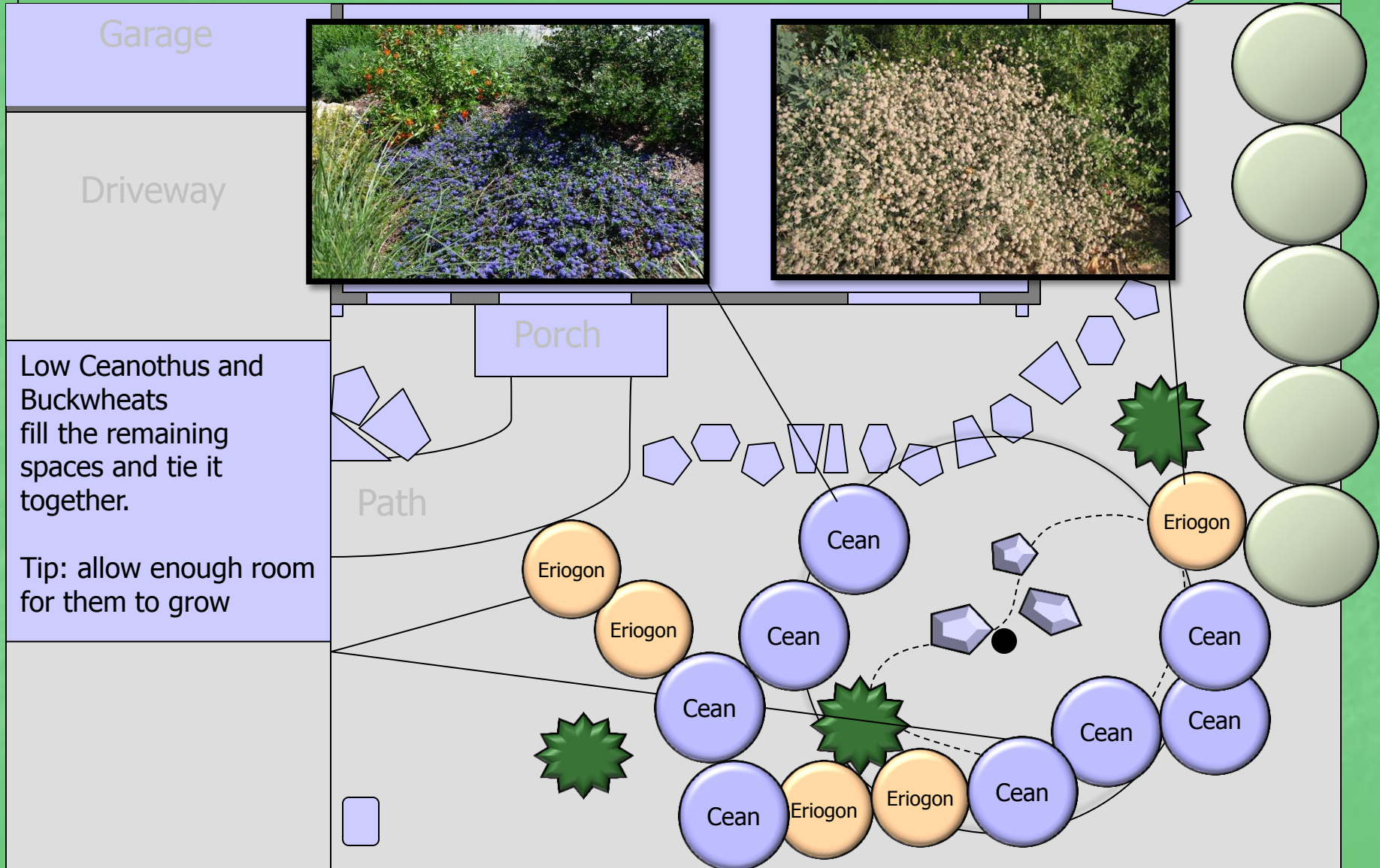
Groundcovers: The Skin



Low Ceanothus and Buckwheats fill the remaining spaces and tie it together.

Tip: allow enough room for them to grow

Groundcovers: The Skin



Garage

Driveway

Porch

Low Ceanothus and Buckwheats fill the remaining spaces and tie it together.

Tip: allow enough room for them to grow

Path

Eriogon

Eriogon

Cean

Cean

Cean

Cean

Eriogon

Eriogon

Cean

Cean

Cean

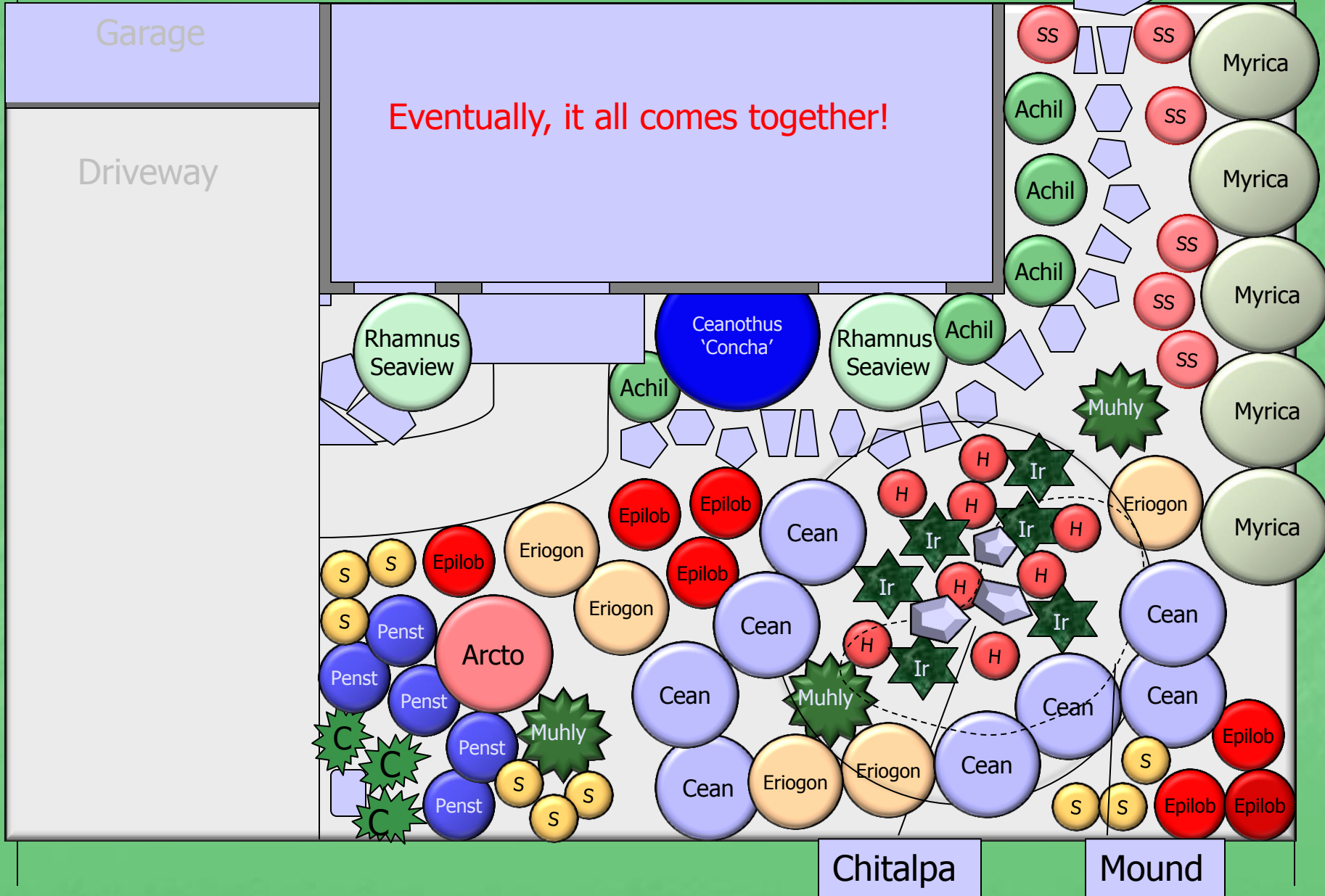
Cean

Eriogon

Planting Plan (for ordering)

<i>Botanical Name</i>	<i>Common Name</i>	<i>Plant Type</i>
1 x Chitalpa tashkentensis	Chitalpa	Tree
1 Arctostaphylos 'Louis Edmonds'	Manzanita	Specimen Shrub
1 Ceanothus 'Concha'	California Lilac	Specimen Shrub
5 Myrica californica	Wax Myrtle	Screening
2 Rhamnus 'Seaview'	Dwarf Coffeeberry	Foundation Shrub
5 Penstemon 'Margarita BOP'	Foothill Penstemon	Perennial
7 Epilobium 'Select Mattole'	California Fuchsia	Perennial
8 Ceanothus 'Centennial'	California Lilac	Ground Cover
5 Achillea millefolium	Yarrow	Perennial
3 Muhlenbergia rigens	Deer Grass	Architectural Grass
6 Salvia spathacea	Hummingbird Sage	Perennial
5 Eriogonum 'Warriner Lytle'	California Buckwheat	Ground Cover
6 Iris 'Canyon Snow'	Pacific Coast Iris	Accent Perennial
7 Heuchera 'Wendy'	Coral Bells	Perennial
9 Eriogonum 'Shasta Sulfur'	Sulfur Buckwheat	Perennial
3 Carex tumulicola	Berkeley Sedge	Clumping Grass

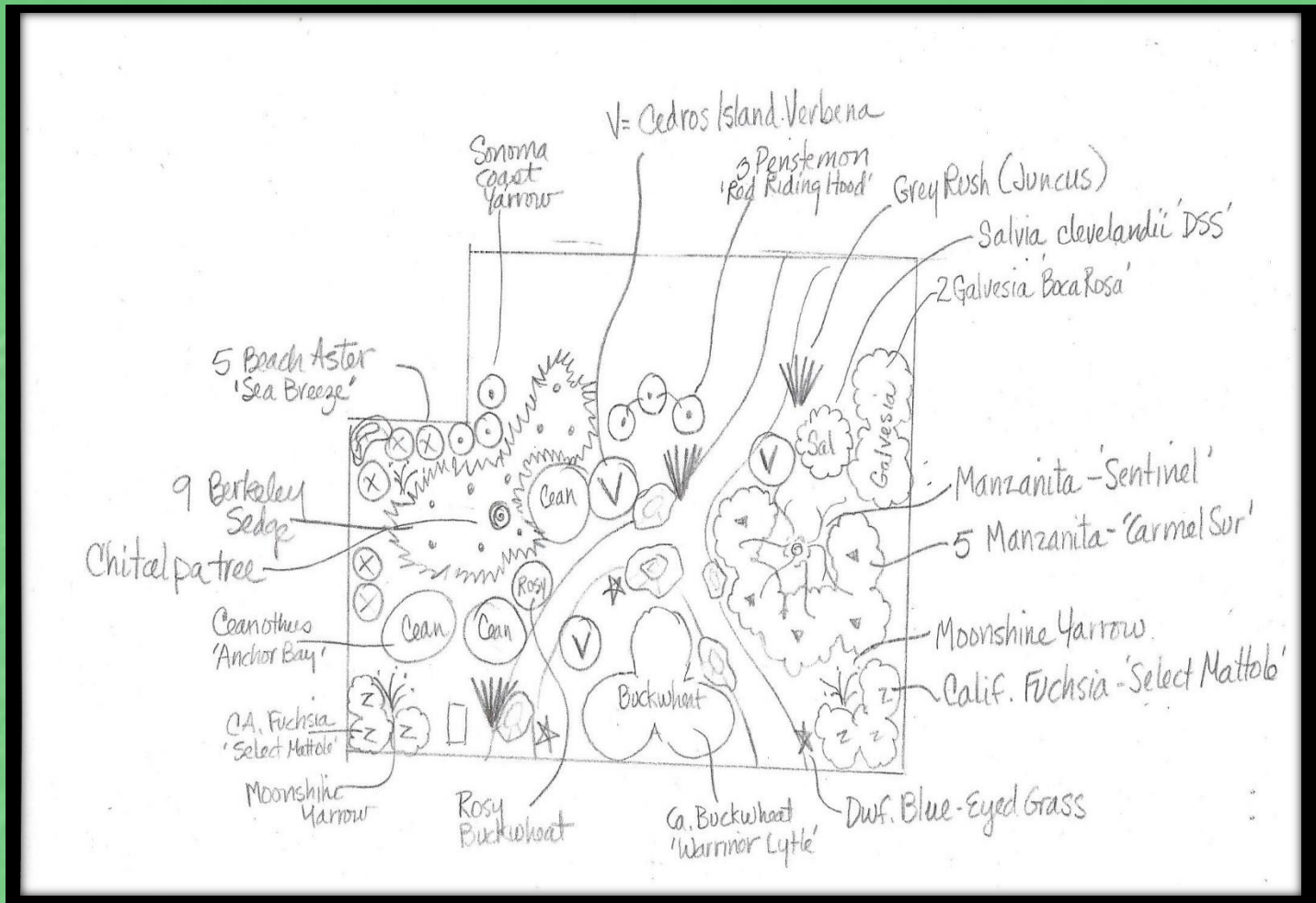
Planting Plan Example



How to work with a professional and still save money

1. Make a list of goals/desires
2. Take pictures of landscapes you like
3. Create an accurate plot map in 1/4" or 1/8" scale
4. Analyse your sun/shade patterns
5. Make a list of plants you like
6. Use a hose and chalk to determine shapes of hardscapes and write down square footages
7. Go to a building supply w/measurements to help establish materials and budget
 - Then bring in a consulting designer to help you pull the elements together.

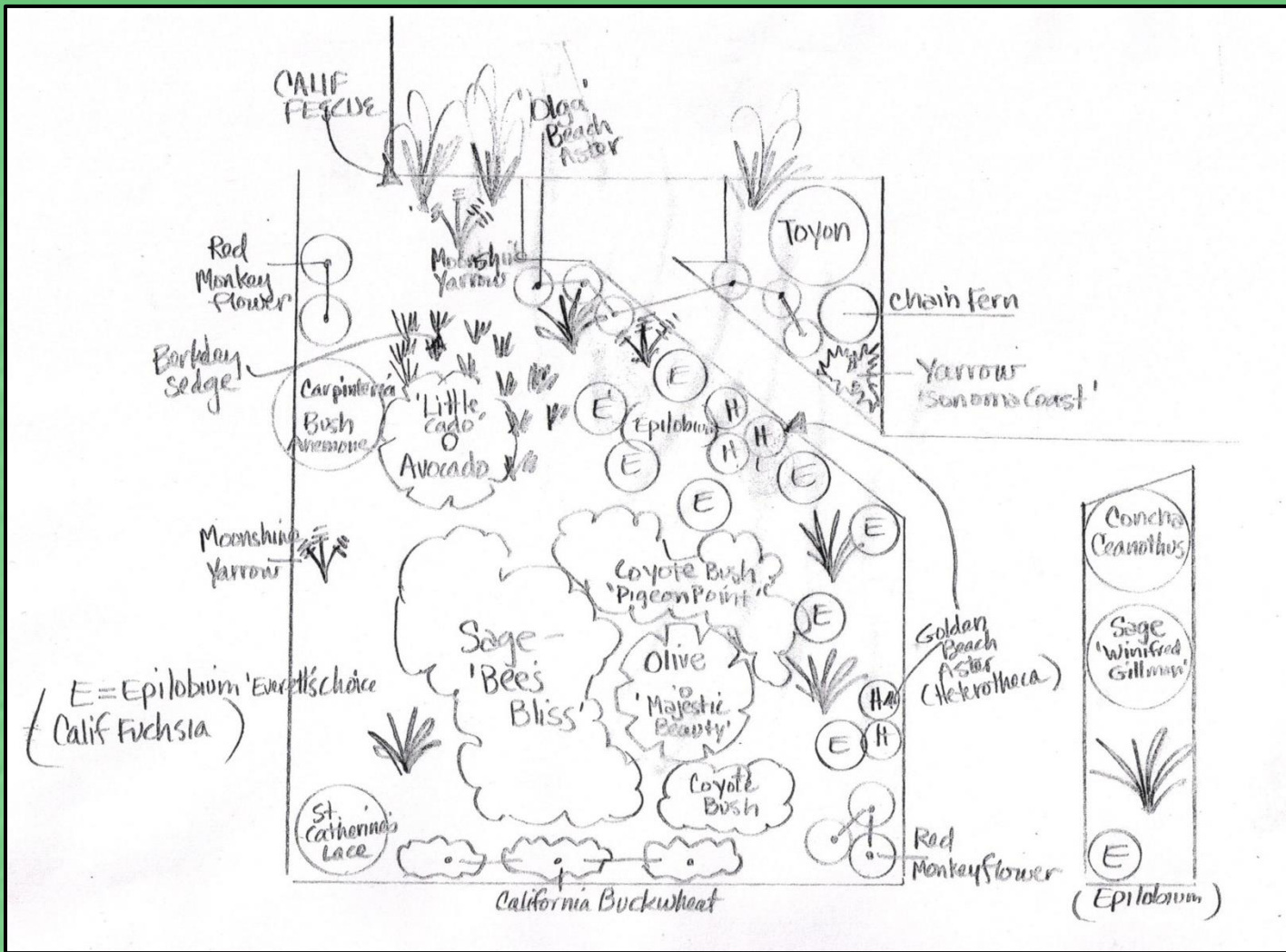
***Some examples of
simple front yard installations***



Design Sketch with Dry Creek



Installed Front Yard



Design Sketch with Olive Tree



Newly planted Oct. '09



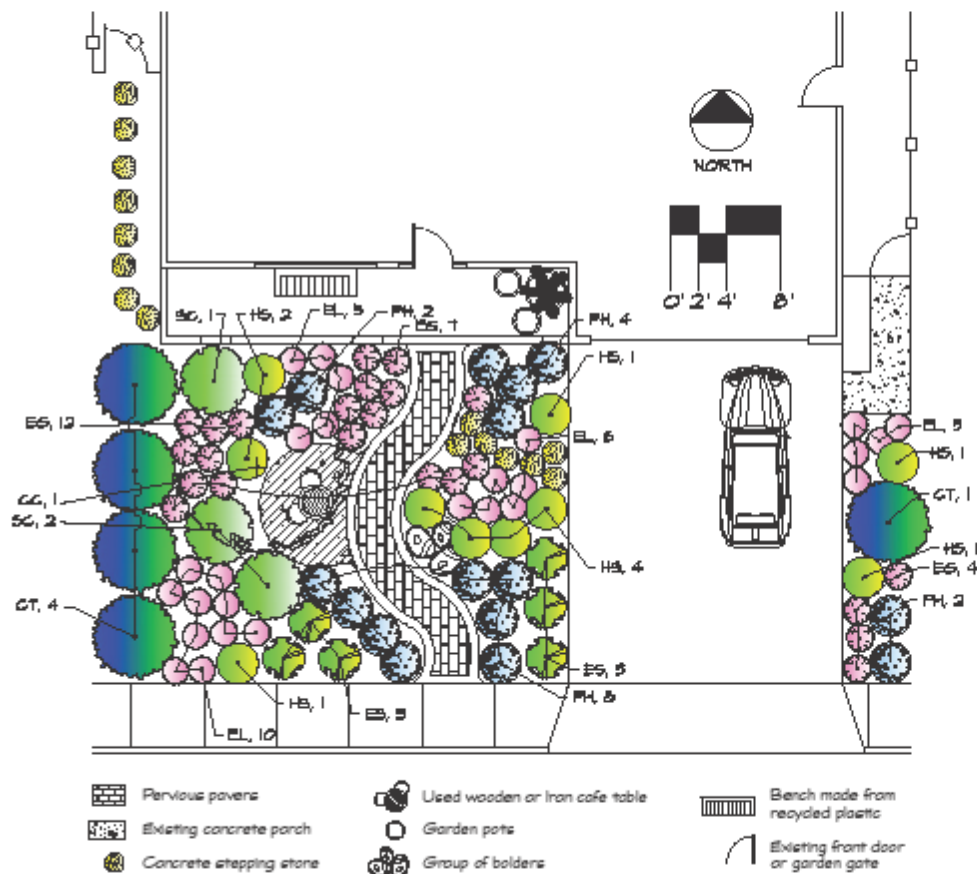
Two years after planting



GREEN GARDENS HEALTHY CREEKS

Café Garden (Small, Sunny Yard)

Sustainable concept design for yards in Santa Clara Valley



Rosy Buckwheat
Eriogonum grande var. *rubescens*



California Fuchsia
Epilobium septentrionale
'Wayne's Silver'



Seaside Daisy
Eriogonum glaucum 'Wayne Roderick'



Beard Tongue
Penstemon heterophyllus
'Margarita Bop'



Cleveland Sage
Salvia clevelandii



Sticky Monkeyflower
Mimulus aurantiacus

About the Concept Design Series

These designs are simple concepts to provide inspiration and ideas. Check with local nurseries, landscapers or other sustainable garden designers to help choose the best plants for your yard.

10 sample plans / City of San Jose website

<http://www.sanjoseca.gov/index.aspx?NID=3734>



START WITH

THE END

IN MIND